



## FEATURES

### Community Highlights

**SIDEWALKS:** Throughout subdivision

**LANDSCAPING:** Decorative fencing & landscaping at entrance, Newburgh Rd & common areas, street trees

**DRIVEWAYS:** Concrete

### Structural Highlights

**SIDING AND TRIM:** Vinyl siding - vinyl and aluminum trim

**BRICK/STONE:** Per standard selection

**EXTERIOR ELECTRIC:** Lighting at all entry areas, two outlets

**SHINGLES:** Dimensional

**STAIN/FINISH:** Exterior latex

**MAIN ENTRANCE DOOR:** Embossed steel with Kwikset door hardware

**BASEMENT:** 7'10" poured concrete wall, egress window

**EXTERIOR WATER ACCESS:** (2) hose bibs

**GARAGE:** Attached two car, fully dry walled & fire taped, prepped for garage door opener, 16' x 7' embossed steel door with window

### Bathroom Highlights

**MAIN BATH:** Smart Sheffield flat panel cabinet, Wilsonart laminate counter, Vinyl Mannington Benchmark floor, Delta Classic chrome single handle faucet and Monitor 13 Series shower valve, 1 piece fiberglass tub surround

**MASTER BATH:** Smart Sheffield flat panel cabinet, Wilsonart laminate counter, Delta Classic single handle chrome faucet, Monitor 13 Series shower valve, ceramic tile floor & walls/floor in shower, glass/chrome shower door

**POWDER ROOM:** Smart Sheffield flat panel cabinet, Wilsonart laminate counter, Vinyl Mannington Benchmark floor, Delta Classic chrome single handle faucet

### Energy Saving & Efficient Systems

**AIR CONDITIONING:** Central

**HEATING:** 95% efficiency gas forced air furnace with digital set back thermostat

**ELECTRICAL:** 150 amp main electrical service panel, Standard duplex receptacles/semi-silent switches

**SUMP PUMP:** Dedicated circuit

**WINDOWS:** Single hung double pane with screens and 6' x 8' door wall

**INSULATION:** Foam energy seal in entire house, R-38 insulation in attic

**WATER HEATER:** Natural Gas 50 gallon quick recovery with power vented unit

**CEILING FAN PREP:** Master bedroom

**ATTIC VENTILATION:** Engineered to maximize air flow

**HOMEBUYER WARRANTY:** Workmanship, Systems, & Structural

### Kitchen Highlights

**APPLIANCES:** Black gas range, microwave and dishwasher

**CABINETS:** Smart Sheffield flat panel with 30" uppers with island

**COUNTERTOPS:** Wilsonart laminate with radius corners

**KITCHEN:** Floor - Vinyl Mannington Benchmark

**SINK:** Installed in island - stainless steel 50/50 double with Delta Linden chrome single handle faucet

**MUD ROOM:** Floor - Vinyl Mannington Benchmark

### Other Features

**LAUNDRY ROOM - SECOND FLOOR:** Smart Sheffield flat panel cabinet, Wilsonart laminate counter, sink with chrome faucet, & gas line installed, floor - Vinyl Mannington Benchmark plus wire shelf

**PAINT:** Flat white ceiling, flat Navajo on all walls with white trim and doors

**DOOR HARDWARE:** Round polished chrome

**CARPET:** Khulman Crossing w/ 6 lb. padding in first floor Den (Grand Maple Only), Great Room and throughout second floor

**DOORS/TRIM:** 2 1/4" OG Casing - 3 1/4" OG Base

NOTE: FEATURES MAY VARY IN OTHER MODELS

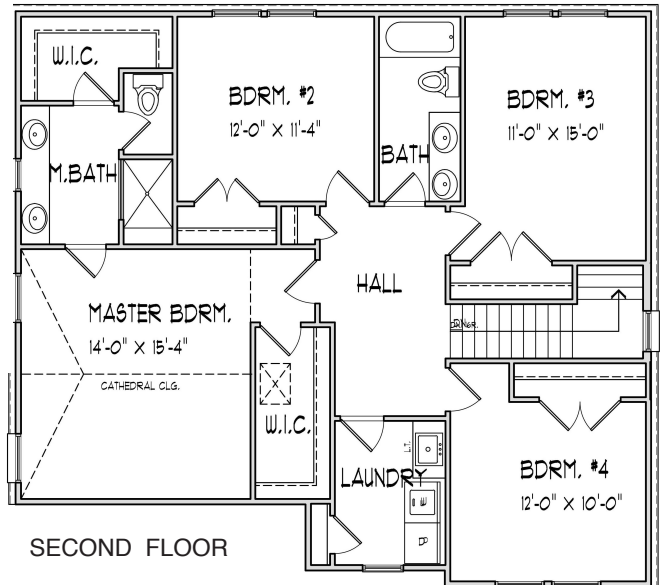
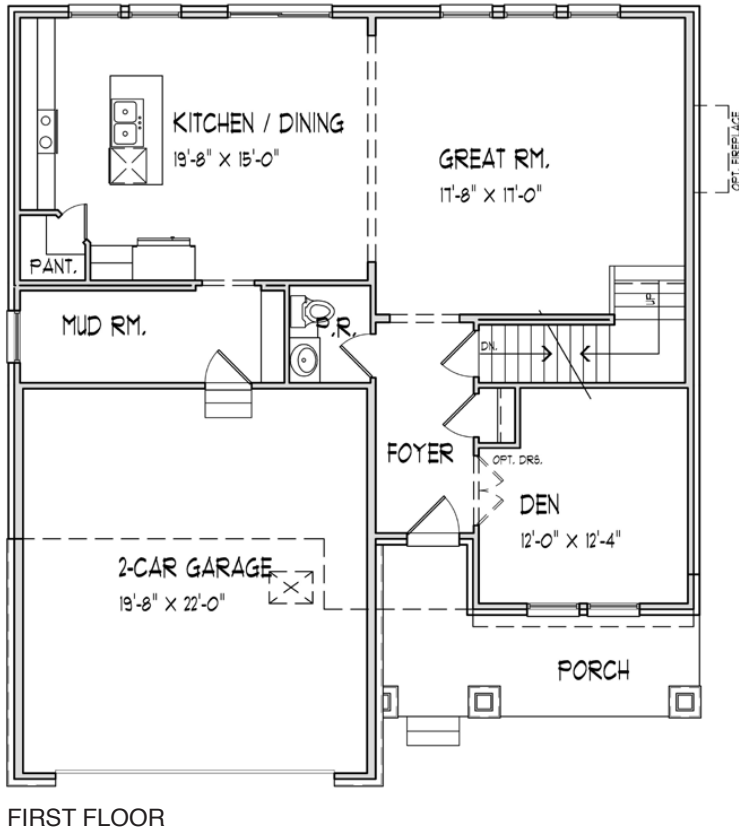




# THE GRAND MAPLE

2,322 SF | 4 BEDROOMS | 2.5 BATHS | PRICED FROM \$289,990

The Grand Maple is a spacious 4 bedroom, 2 1/2 bath craftsman-style home – perfect for a growing family.



7800 North Newburgh Road | Westland, Michigan 48185 | 734-956-6303 | [ClydeSmithFarms.com](http://ClydeSmithFarms.com)







# THE GRAND MAPLE

2,322 SF | 4 BEDROOMS | 2.5 BATHS | PRICED FROM \$289,990



ELEVATION 1 (\$289,990)



ELEVATION 2 (\$289,990 + \$5,150)



ELEVATION 3 (\$289,990 + \$7,970)



ELEVATION 4 (\$289,990 + \$9,130)

ELEVATION 5: Additional wrap around porch option (\$289,990 + \$14,900). ELEVATION 6: Added brick up to the windows on the garage (\$289,990 + \$10,280). Pricing as of 4-2-18 - subject to change without notice



7800 North Newburgh Road | Westland, Michigan 48185 | 734-956-6303 | ClydeSmithFarms.com





# SITE PLAN

