

FEATURES

Community Highlights

SIDEWALKS: Throughout subdivision

LANDSCAPING: Decorative fencing & landscaping at entrance, Newburgh Rd & common areas, street trees

DRIVEWAYS: Concrete

Structural Highlights

SIDING AND TRIM: Vinyl siding - vinyl and aluminum trim

BRICK/STONE: Per standard selection

EXTERIOR ELECTRIC: Lighting at all entry areas, two outlets

SHINGLES: Dimensional

STAIN/FINISH: Exterior latex

MAIN ENTRANCE DOOR: Embossed steel with Kwikset door hardware

BASEMENT: 7'10" poured concrete wall, egress window

EXTERIOR WATER ACCESS: (2) hose bibs

GARAGE: Attached two car, fully dry walled & fire taped, prepped for garage door opener, 16' x 7' embossed steel door with window

Bathroom Highlights

MAIN BATH: Smart Sheffield flat panel cabinet, Wilsonart laminate counter, Vinyl Mannington Benchmark floor, Delta Classic chrome single handle faucet and Monitor 13 Series shower valve, 1 piece fiberglass tub surround

MASTER BATH: Smart Sheffield flat panel cabinet, Wilsonart laminate counter, Delta Classic single handle chrome faucet, Monitor 13 Series shower valve, ceramic tile floor & walls/floor in shower, glass/chrome shower door

POWDER ROOM: Smart Sheffield flat panel cabinet, Wilsonart laminate counter, Vinyl Mannington Benchmark floor, Delta Classic chrome single handle faucet

Energy Saving & Efficient Systems

AIR CONDITIONING: Central

HEATING: 95% efficiency gas forced air furnace with digital set back thermostat

ELECTRICAL: 150 amp main electrical service panel, Standard duplex receptacles/semi-silent switches

SUMP PUMP: Dedicated circuit

WINDOWS: Single hung double pane with screens and 6' x 8' door wall

INSULATION: Foam energy seal in entire house, R-38 insulation in attic

WATER HEATER: Natural Gas 50 gallon quick recovery with power vented unit

CEILING FAN PREP: Master bedroom

ATTIC VENTILATION: Engineered to maximize air flow

HOMEBUYER WARRANTY: Workmanship, Systems, & Structural

Kitchen Highlights

APPLIANCES: Black gas range, microwave and dishwasher

CABINETS: Smart Sheffield flat panel with 30" uppers with island

COUNTERTOPS: Wilsonart laminate with radius corners

KITCHEN: Floor - Vinyl Mannington Benchmark

SINK: Installed in island - stainless steel 50/50 double with Delta Linden chrome single handle faucet

MUD ROOM: Floor - Vinyl Mannington Benchmark

Other Features

LAUNDRY ROOM - SECOND FLOOR: Smart Sheffield flat panel cabinet, Wilsonart laminate counter, sink with chrome faucet & gas line installed, floor - Vinyl Mannington Benchmark plus wire shelf

PAINT: Flat white ceiling, flat Navajo on all walls with white trim and doors

DOOR HARDWARE: Round polished chrome

CARPET: Khulman Crossing w/ 6 lb. padding in first floor Den (Grand Maple Only), Great Room and throughout second floor

DOORS/TRIM: 2 1/4" OG Casing - 3 1/4" OG Base

NOTE: FEATURES MAY VARY IN OTHER MODELS

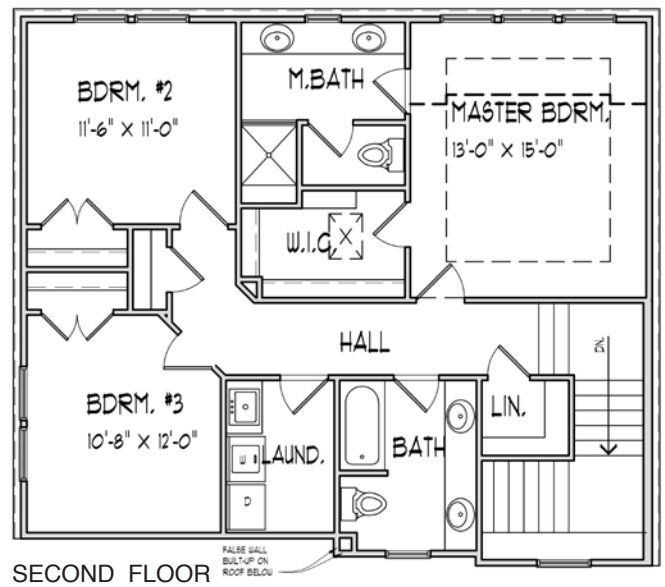
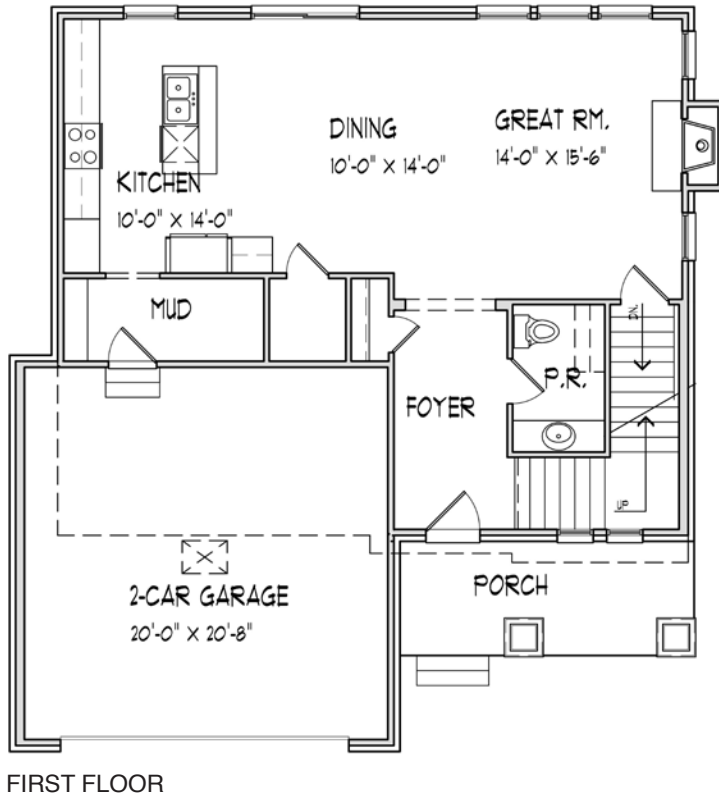




THE GREENBRIER II

1,815 SF | 3 BEDROOMS | 2.5 BATHS | PRICED FROM \$264,990

The Greenbrier II is a 3 bedroom, 2 1/2 bath craftsman-style home with a spacious open plan, tying together family activities.



7800 North Newburgh Road | Westland, Michigan 48185 | 734-956-6303 | ClydeSmithFarms.com





THE GREENBRIER II

1,815 SF | 3 BEDROOMS | 2.5 BATHS | PRICED FROM \$264,990



ELEVATION A: (\$264,990)



ELEVATION B: (\$264,990 +\$2,900)



ELEVATION C: (\$264,990 +\$3,150)



ELEVATION D: (\$264,990 +\$5,250)

Optional stone on front wall under porch ceiling available - see sales for additional pricing
Pricing as of 3-16-18 - subject to change without notice



7800 North Newburgh Road | Westland, Michigan 48185 | 734-956-6303 | ClydeSmithFarms.com





SITE PLAN

